

MATERIAL AND FINISHES:

SMA CONNECTOR

BODY : BRASS  
PLATED : GOLD

CENTER CONTACT : BE-CU  
PLATED : GOLD

INSULATOR : TEFLON

NUT : BRASS  
PLATED : GOLD

WASHER : PHOSPHOR BRONZE  
PLATED : GOLD

U.FL CONNECTOR:

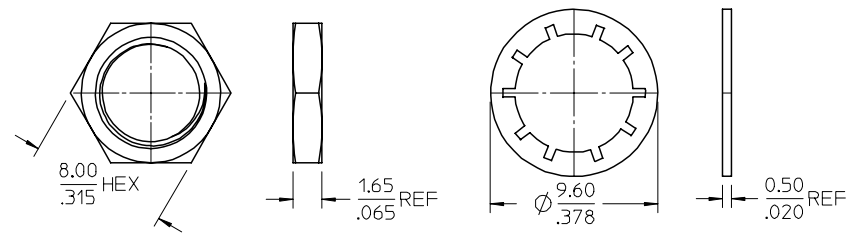
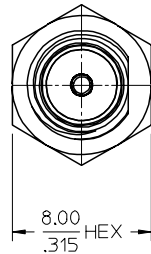
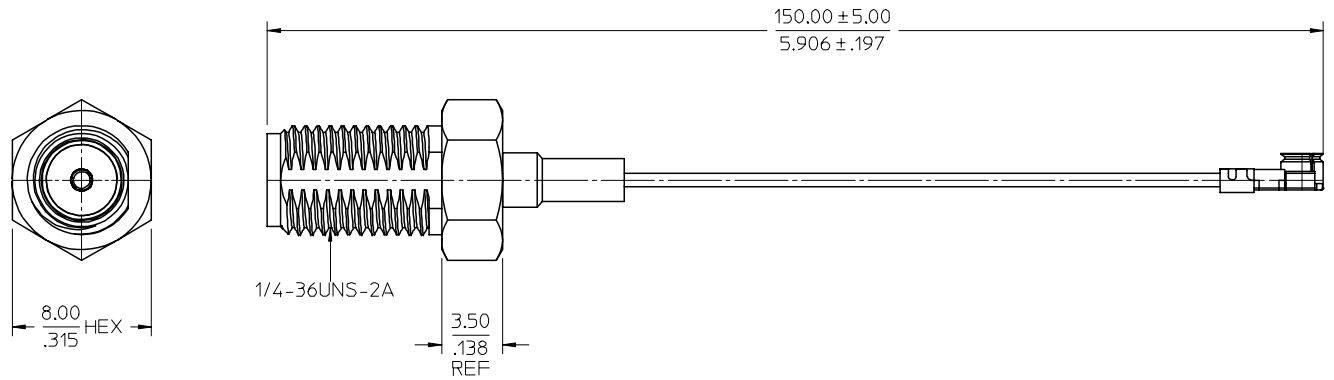
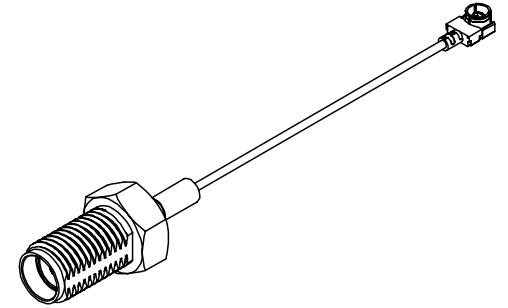
SHELL : PHOSPHOR BRONZE  
PLATED : TIN

CENTER CONTACT : PHOSPHOR BRONZE  
PLATED : GOLD

INSULATOR : PBT

CABLE: DIA. 0.80 CABLE

HEAT SHRINK TUBE : VERSAFIT V2



NEW RELEASED EDR: 2006-04-29 EDR NO. 2006-0475	DRWN: SCHOU 2006/05/04 CHKD: 2006/05/05 APPR: MHIANG 2006/05/05	QUALITY SYMBOLS	GENERAL TOLERANCES (UNLESS SPECIFIED)		DIMENSION STYLE		SCALE	DESIGN UNITS	THIRD ANGLE PROJECTION	
		▽=0 ▽=0	mm	INCH	MM/IN					
		4 PLACES ± --- ± ---	3 PLACES ± --- ± ---	2 PLACES ± --- ± ---	1 PLACE ± --- ± ---	DRAWN BY: JOYCE CHECKED BY: KERRIE APPROVED BY: MISEN	DATE: 2006/03/14 DATE: 2006/03/14 DATE: 2006/03/14	TITLE: SMA JACK/BLK 50 OHM TO UFL WITH DIA. 0.8 CABLE CAL-SMA J/BLK-UFL		
		ANGULAR ± --- °		DRAFT WHERE APPLICABLE MUST REMAIN WITHIN DIMENSIONS		MATERIAL NO.: 897611710 SIZE: A2		DOCUMENT NO.: SD-89761-171		SHEET NO.: 1 OF 1